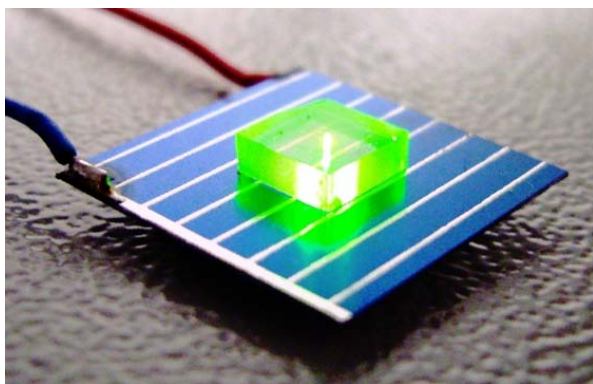


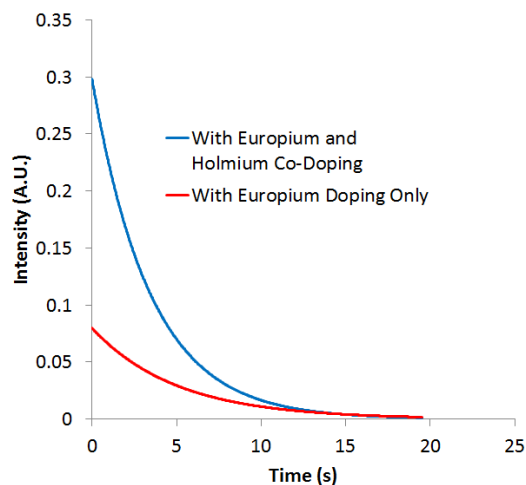
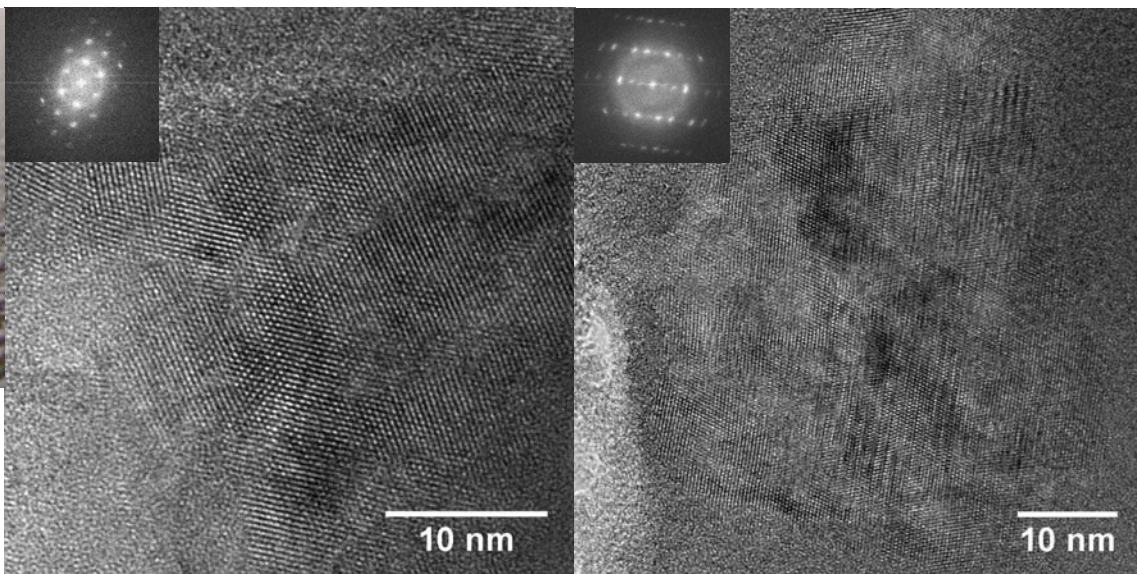
Nanoparticles in ZBLAN Glass Ceramics

BaF₂ Orthorhombic

BaF₂ FCC



Er³⁺-doped ZBLAN excited at 1542 nm



- Unreported BaF₂ crystalline phases were found via both in-situ TEM and ex-situ annealing experiments in addition to BaCl₂
- XRD experiments had suggested that only BaCl₂ was present
- Crystals vary in size between 10-100 nm for all phases
- Increase in photoluminescence with addition of Holmium.

Argonne National Lab: Carlos Alvarez, Yuzi Liu, Amanda Petford-Long
Univ. of Tenn. Space Institute: Jacqueline A. Johnson, Lee Leonard,
Sharon Gray

Electron Microscopy Center