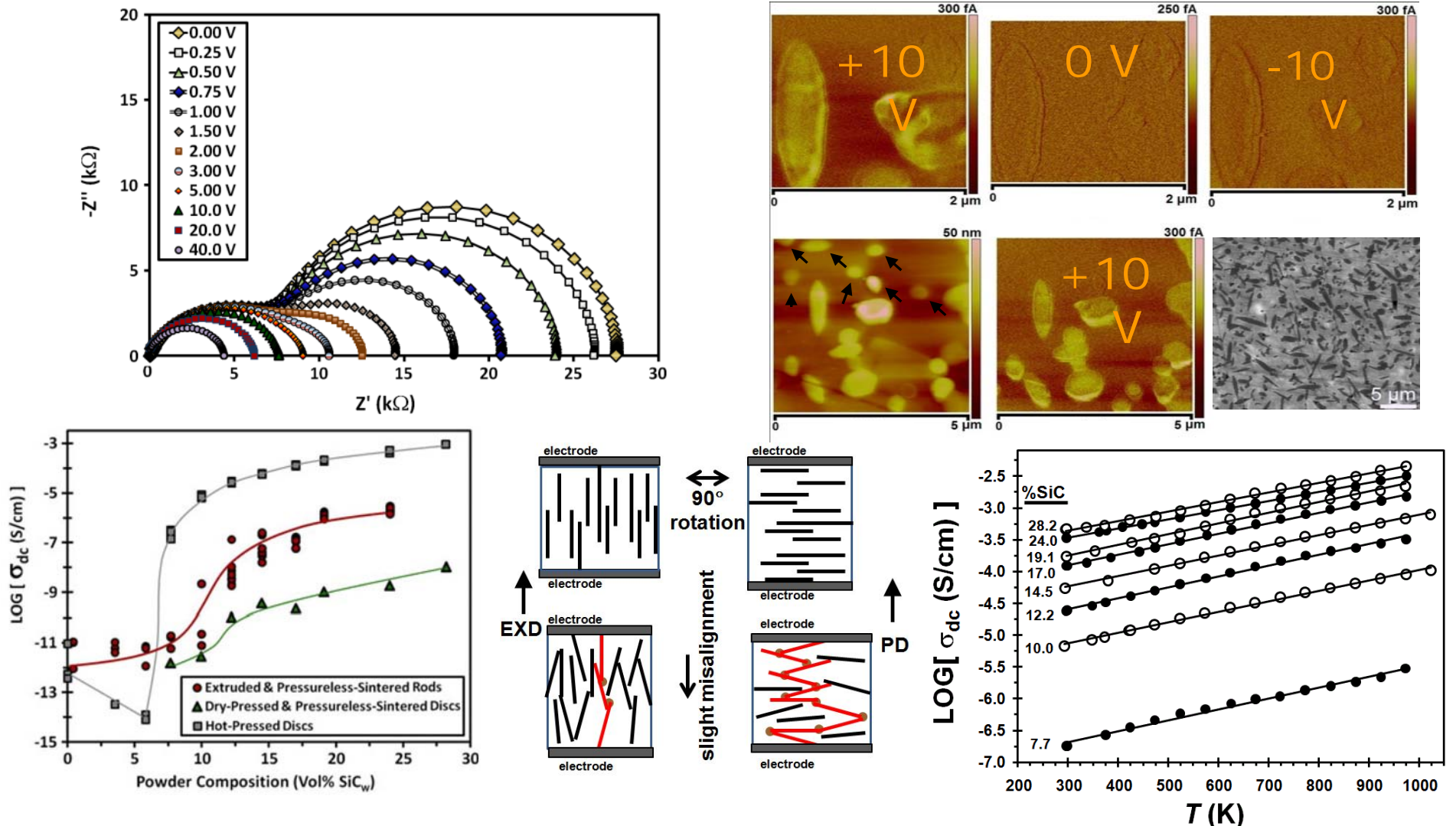


DMR-0604211 : Quantitative Relationships in Insulator Conductor Composites

P.I. Rosario A. Gerhardt, Georgia Institute of Technology



Properties of $\text{SiC}_w\text{-Al}_2\text{O}_3$ composites are anisotropic and depend on the processing, SiC_w content, interwhisker contact, electrodes, frequency, dc bias, and temperature.