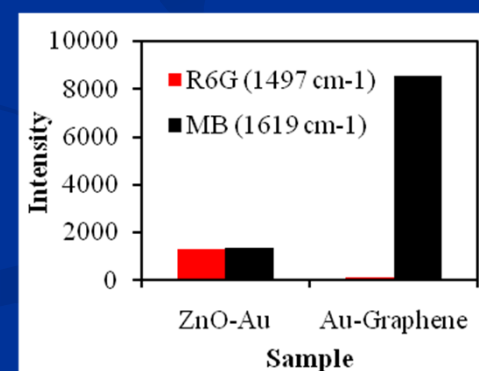
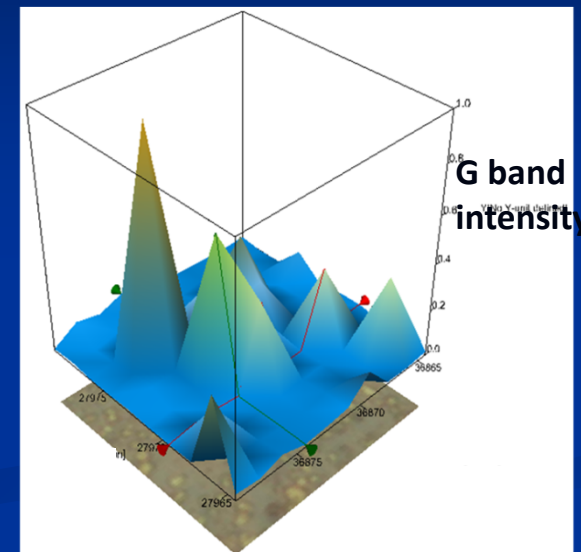
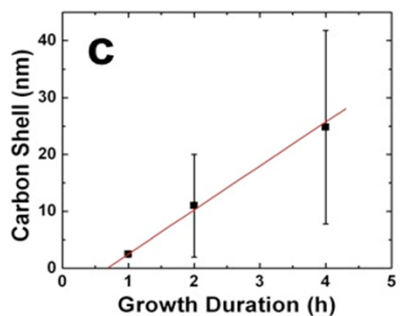
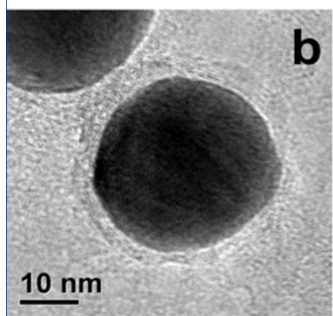
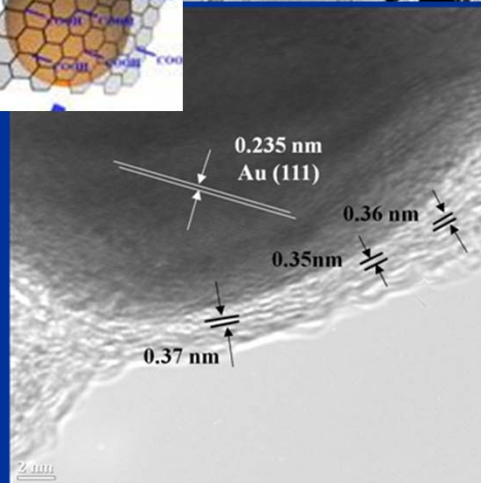
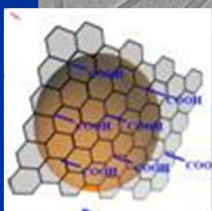
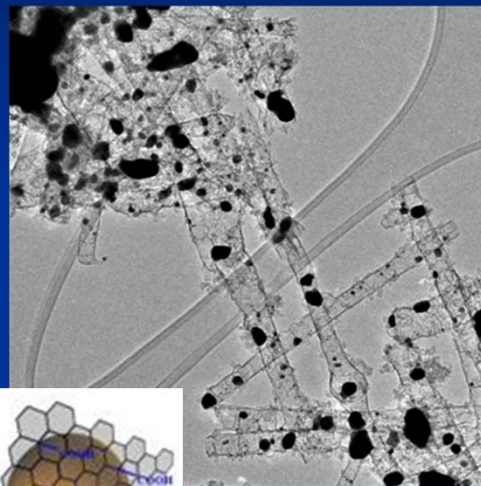
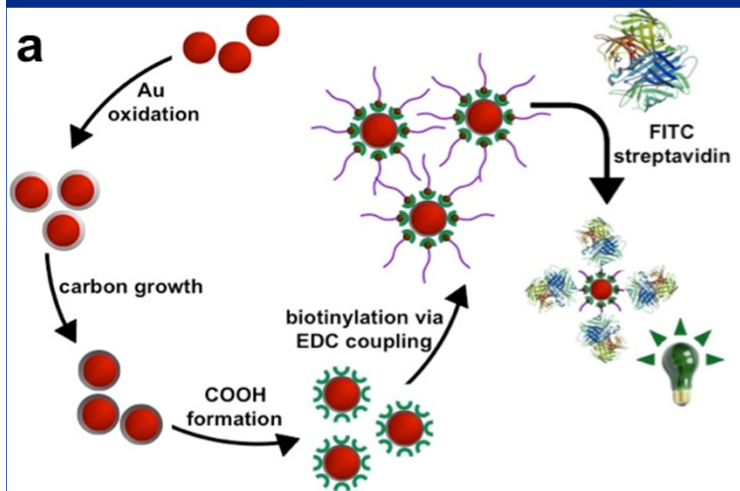


Graphene encapsulated noble metal nanoparticles – PI: Nitin Chopra, The University of Alabama, ECCS 0925445, 08/31/09-08/31/12

Develop and fundamentally understand multi-functional graphene-based nanoscale heterostructures – Applications in analytical devices and chemical sensors



Chopra et al., Chemistry of Materials, 2009, Shi and Chopra, submitted to Nature Nanotechnology, Wu and Chopra, submitted to Advanced Materials * nchopra@eng.ua.edu